



EISENBAU
KRÄMER

EBK *renewables*



Jacket-Foundations

Steel Pipes and Prefabricated Steel Pipe Components
for the Renewables Industry

Steel Pipes and Prefabricated Steel Pipe Components for the Renewables Industry

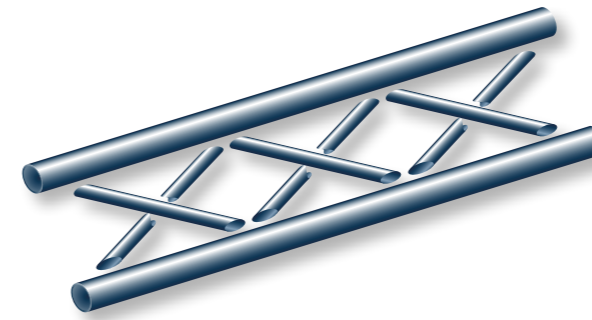
The ambitions for renewable energy generation will require large volumes of jacket fabrications for substations and wind tower structures.

Since the time when the first oil exploration in the North Sea took place in the middle of the sixties, EBK were specialising in the manufacture of large steel pipes for offshore applications.

With this experience we provide a one-stop solution in the field of jacket fabrication by supplying complete kits of pipes and prefabricated pipe components to simplify further processing.

All of our steel tubulars can be manufactured from plate to EN 10225, EN 10025 or other alternative European and International standards at customers' request. We offer a comprehensive size range covering all products within both primary and secondary structures including **tubulars, stubs, cans, legs, bracings, piles, pile sleeves and j-tubes.**

Always one step ahead in terms of quality, EBK was the first manufacturer of steel pipes in Germany to achieve certification to ISO 9001 for longitudinally welded pipes in 1990.



Our service capability includes:

- Supply of complete package of materials for jacket construction (single pipes and/or point-to-point components)
- Project Management and single point of contact directly with the pipe manufacturer
- Cutting tubes to specified lengths
- Typical transition weld preparation (taper)
- Accurate end profiling
- Build sequence deliveries to the point of final assembly

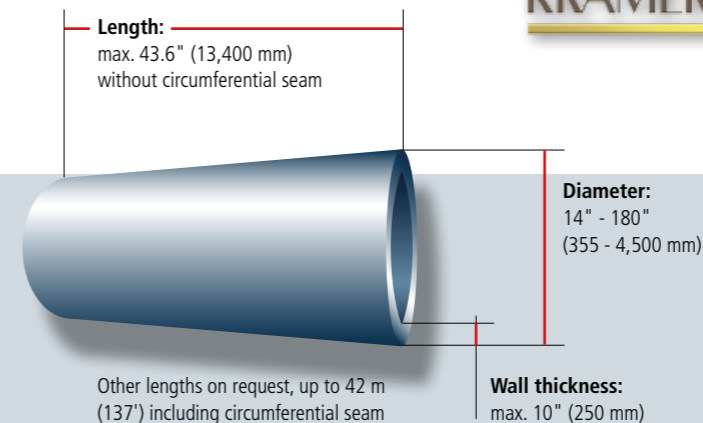
Furthermore, we also provide solutions for tidal, wave and floating wind devices.

TATA STEEL



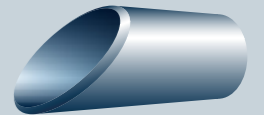
EISENBAU KRÄMER offers a cost effective, high throughput solution to meet the increasing demand for steel jacket foundation components. Our partnership with TATA STEEL UK means that we can deliver a complete project package, covering all sizes required for jacket construction.

Dimensions:

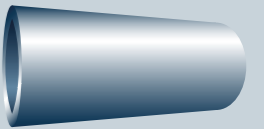


Tailored end profiling and assembly

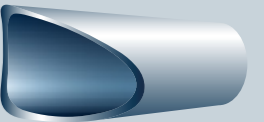
Mitre cut



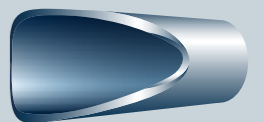
Straight cut



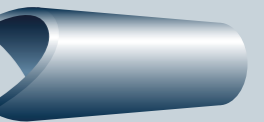
Saddle cut with external bevel



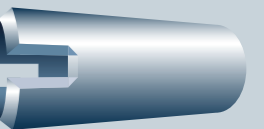
Saddle cut with internal and external bevel



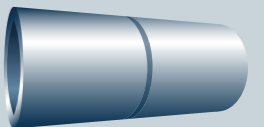
Double mitred cut



Straight slot with external bevel



Circumferential Welding





Your contacts for further details in regard to our delivery program for steel pipes and components for the renewables industry are:

Sales offshore/renewables: Mr. Pascal Bayram

Phone: +49 2732 588 214

E-Mail: p.bayram@ebkpipe.com



Eisenbau Krämer GmbH

Main Plant & Headquarters:
Karl-Krämer-Strasse 12
57223 Kreuztal-Kredenbach
Germany

Phone: +49 2732 588-0

Fax: +49 2732 588-102

E-Mail: info@ebkpipe.com

Internet: www.ebkpipe.com

